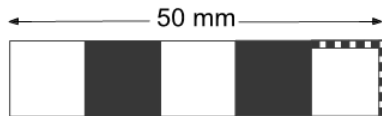


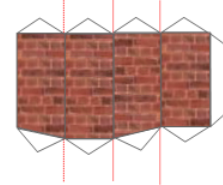


Maßstab 1: 87  
Nenngröße H0

**H0**



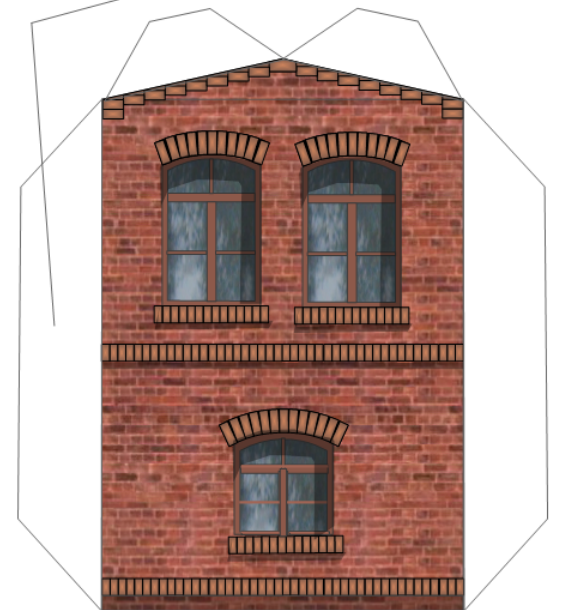
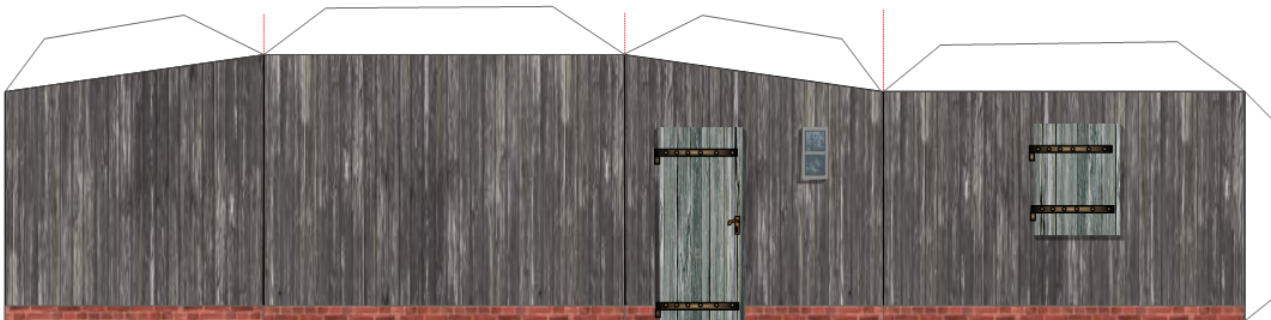
Schornstein

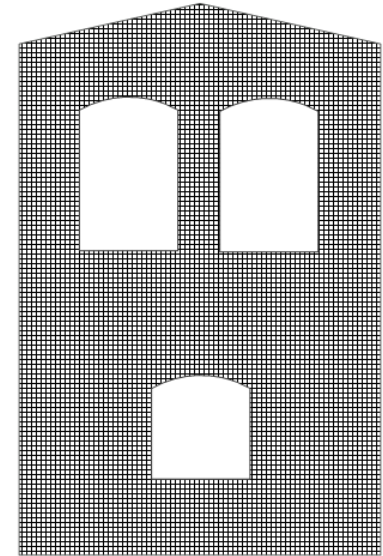
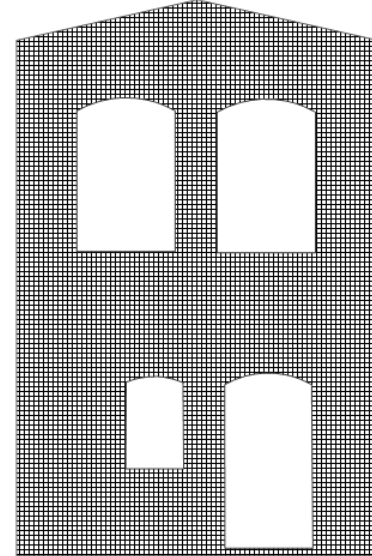
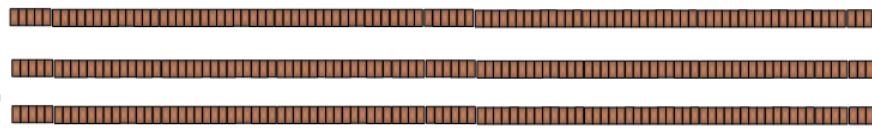
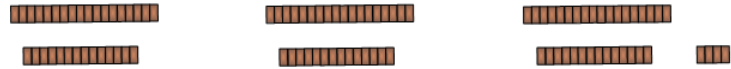
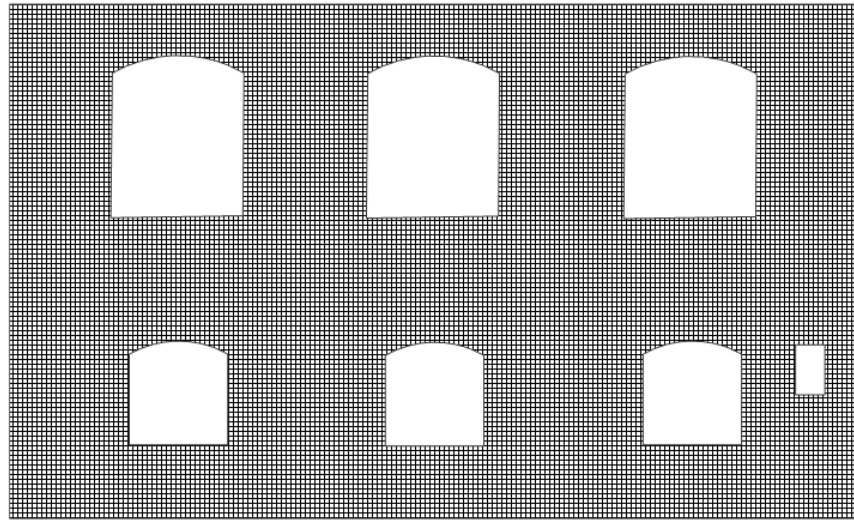
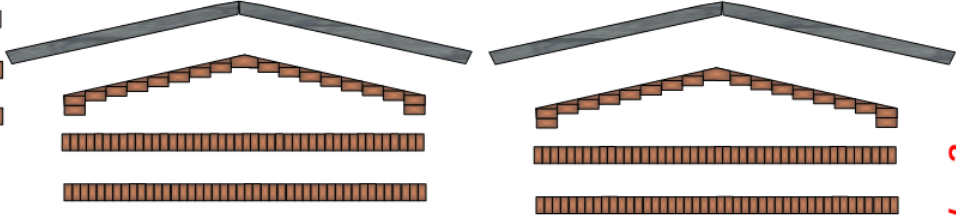
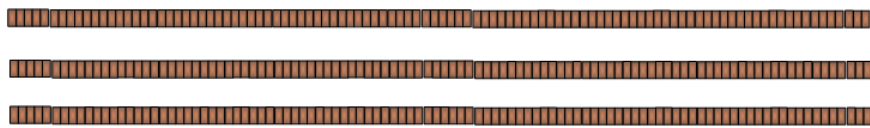


## **Sächsisches Stellwerk III**

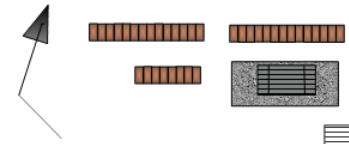
Artikelnummer: BSW0014-H0 Blatt 1 von 5

100-160 g/m<sup>2</sup>

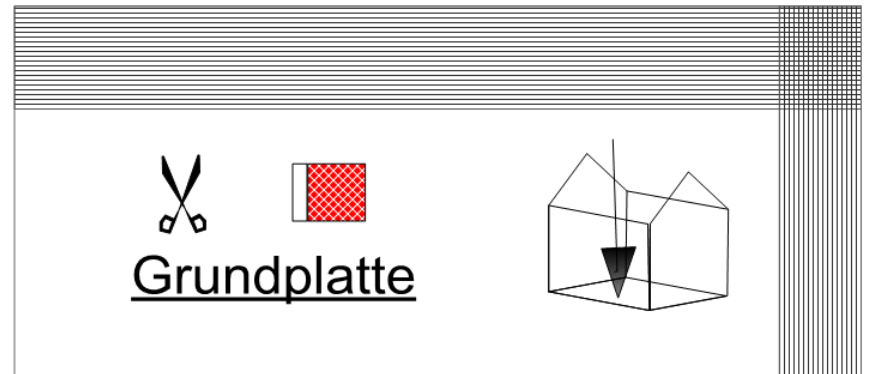



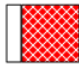


210-300 g/m<sup>2</sup>  
50 mm



Fäkaliengrube



   
Grundplatte

**H0**  
Maßstab 1: 87  
Nenngröße H0



Artikelnummer: BSW0014-H0 Blatt 2 von 5

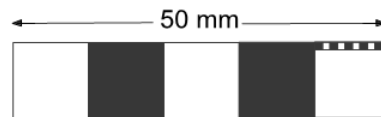
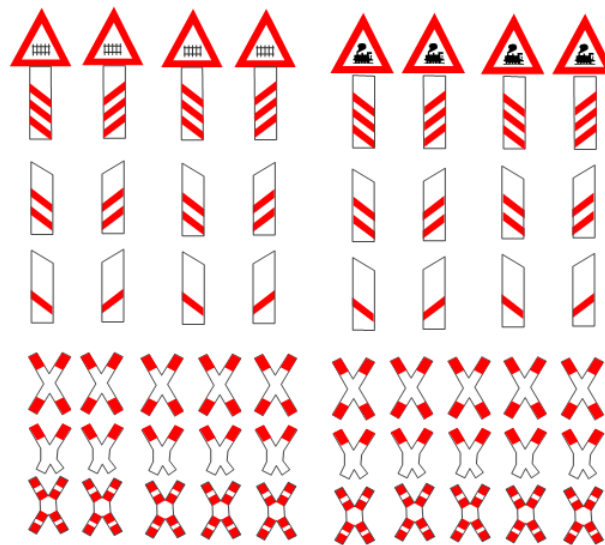
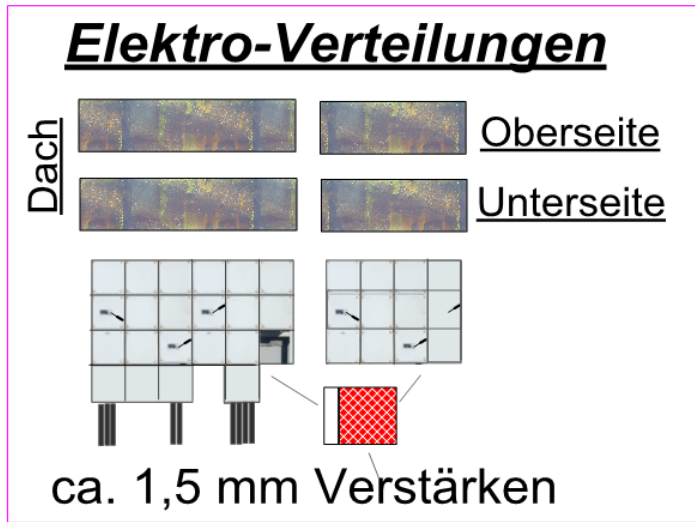


H0  
 Maßstab 1: 87  
 Nenngröße H0



Dachunterseite

Dach  
 210-300 g/m<sup>2</sup>

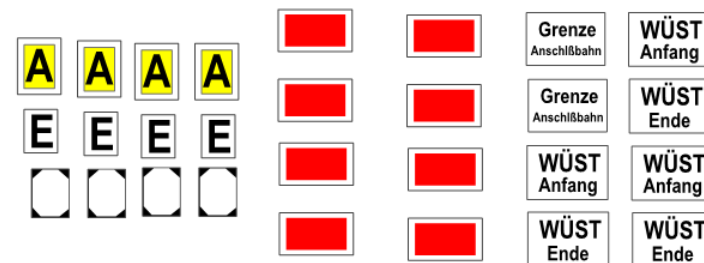


W1 W2 W3 W4  
 B1 B2 B3 B4

Abzw. ABZWEIG  
 ABZWEIG Abzw.

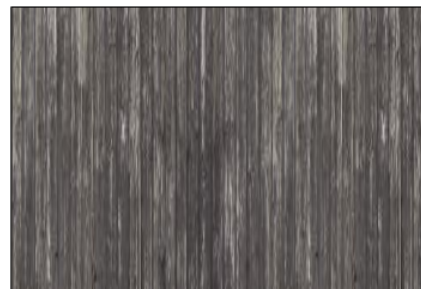
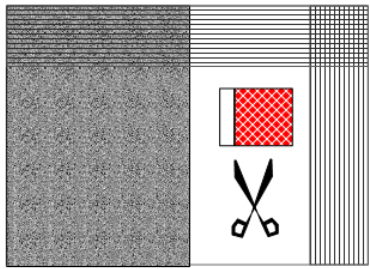
Stellwerk B2  
 Stellwerk B2  
 Stellwerk B2  
 Stellwerk B2

Stellwerk W1  
 Stellwerk W1  
 Stellwerk W1  
 Stellwerk W1



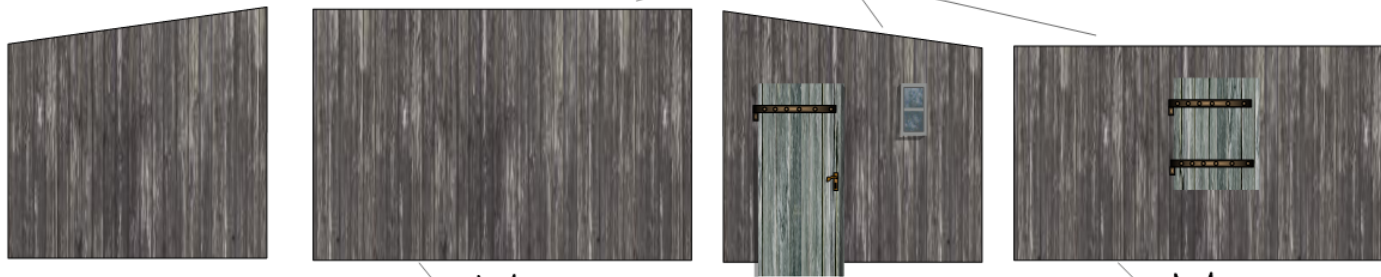
Dach

Dachunterseite



Grundplatte

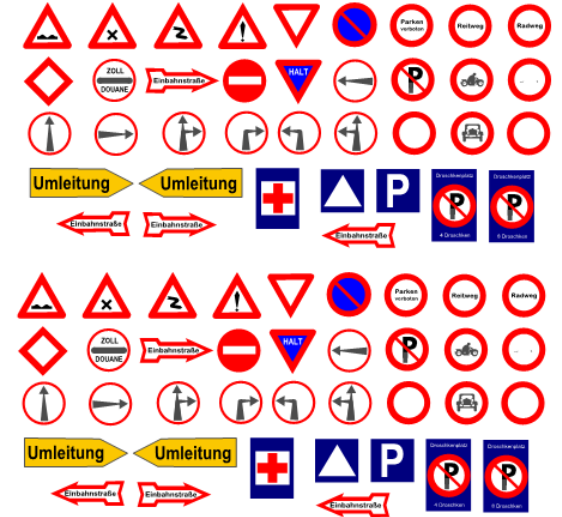
Teile zum Überkleben



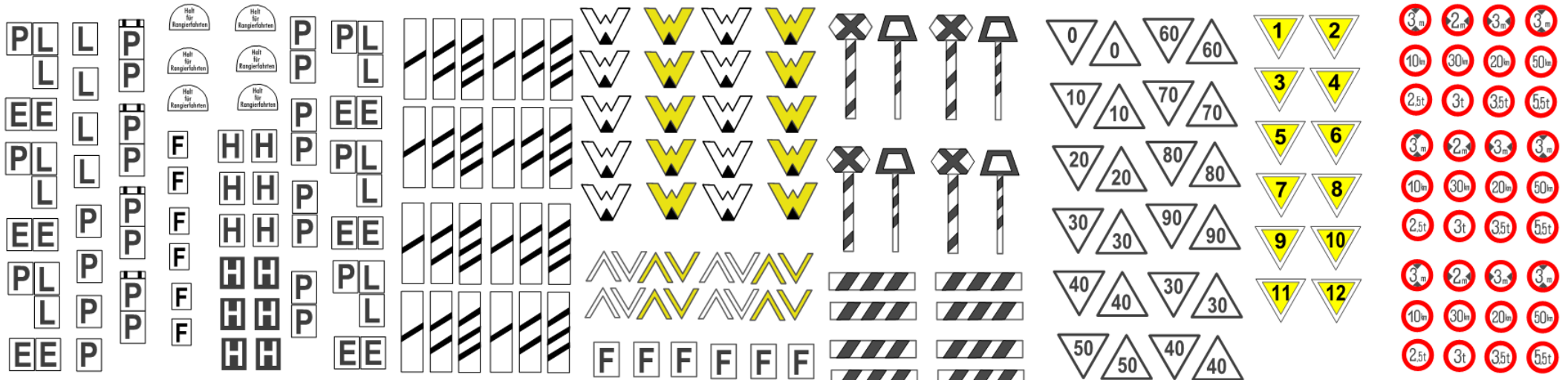
210-300 g/m<sup>2</sup>



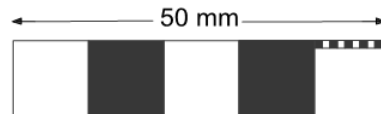
Lagerschuppen



Verkehrsschilder ab 1934



Artikelnummer: BSW0014-H0 Blatt 4 von 5

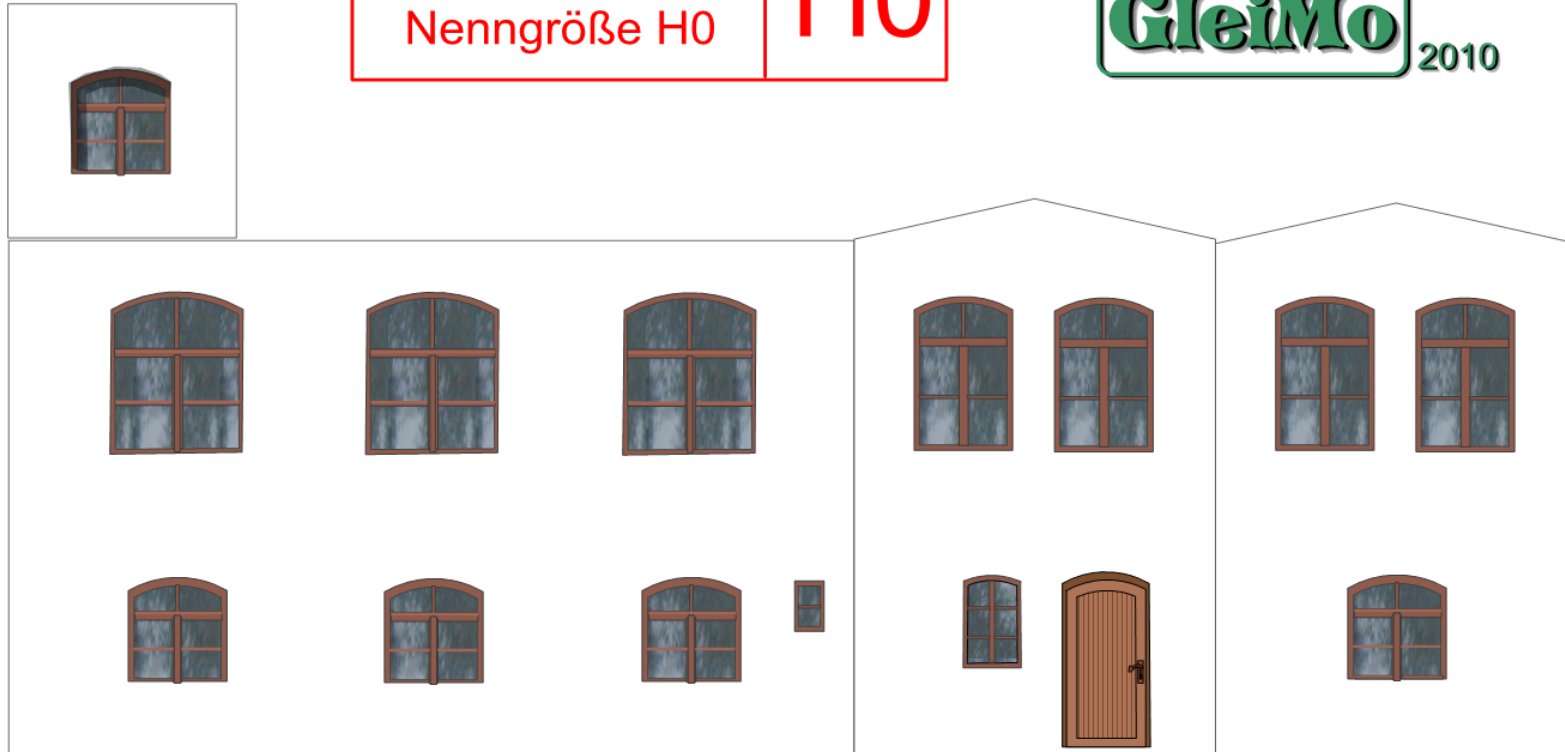


Maßstab 1: 87  
Nenngröße H0

H0

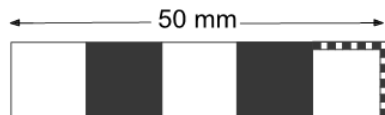
Maßstab 1: 87  
Nenngröße H0

H0



## **Teile zum Hinterkleben**

Artikelnummer: BSW0014-H0 Blatt 5 von 5



**80-90 g/m<sup>2</sup>**