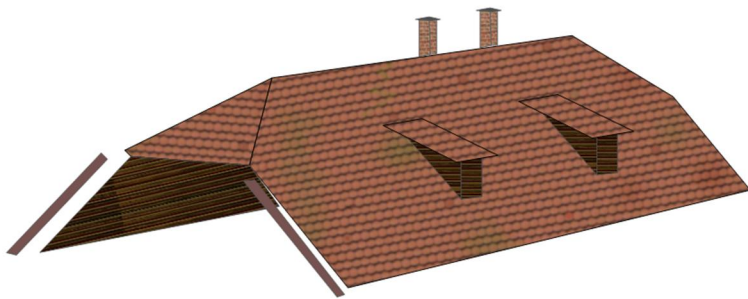


Bei Fenstern im Fachwerk- und Blockbereich, die für die Beleuchtung vorgesehen sind, nur den rot schraffierten Bereich in der Außenschicht ausschneiden und mit dem entsprechenden blau gekennzeichneten Teil aus Papier überkleben. Der Blockbereich ist in aller Regel der Wohnbereich und der Fachwerkbereich (oberes Stockwerk) der Schlafbereich.

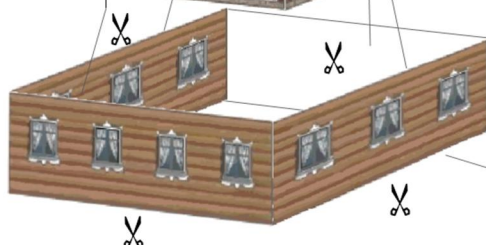


Umgebäudehaus



Fachwerkteil

Massivteil



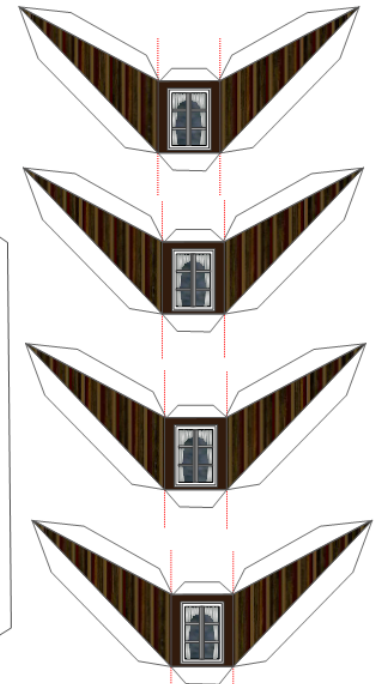
Blockstube

Glei No 2010

Umgebindehaus "Dorfladen"



B



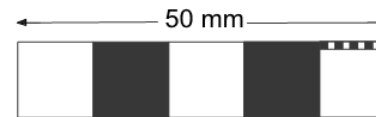
Dachgauben

Artikelnummer: GHE0004-H0 Blatt 1 von 9

Geschäftshaus



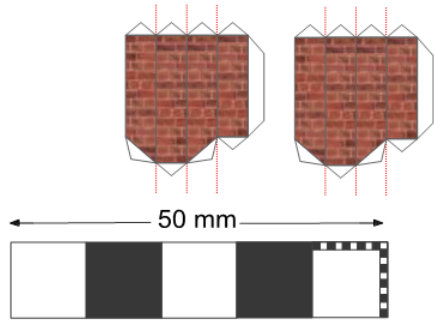
A
B



100-160 g/m²

H0
Maßstab 1: 87
Nenngröße H0

Schornsteine



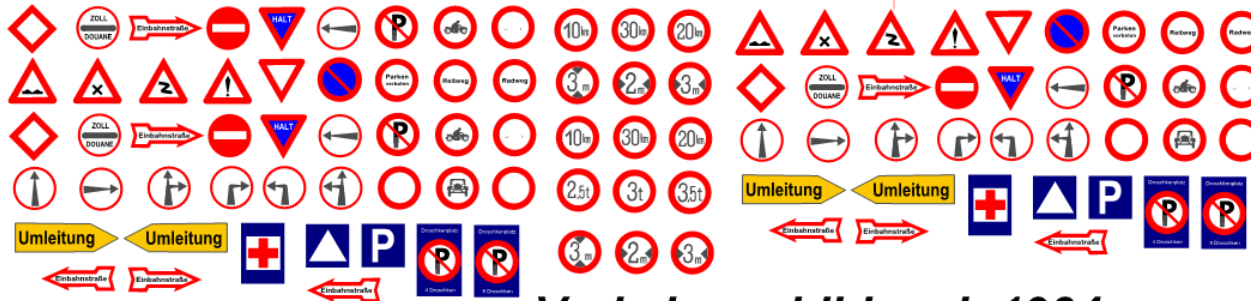
Maßstab 1: 87
Nenngröße H0

H0

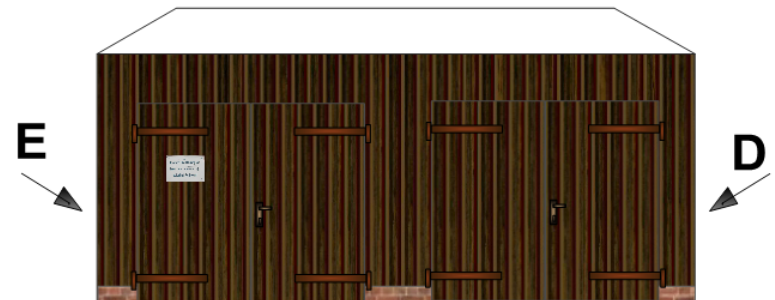
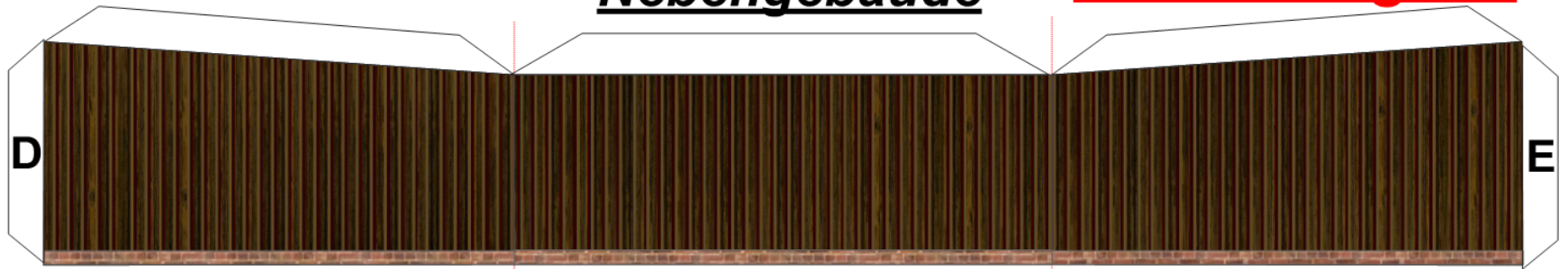


Nebengebäude

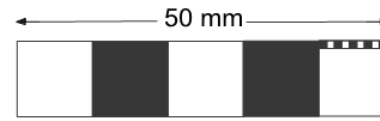
100-160 g/m²



Verkehrsschilder ab 1934

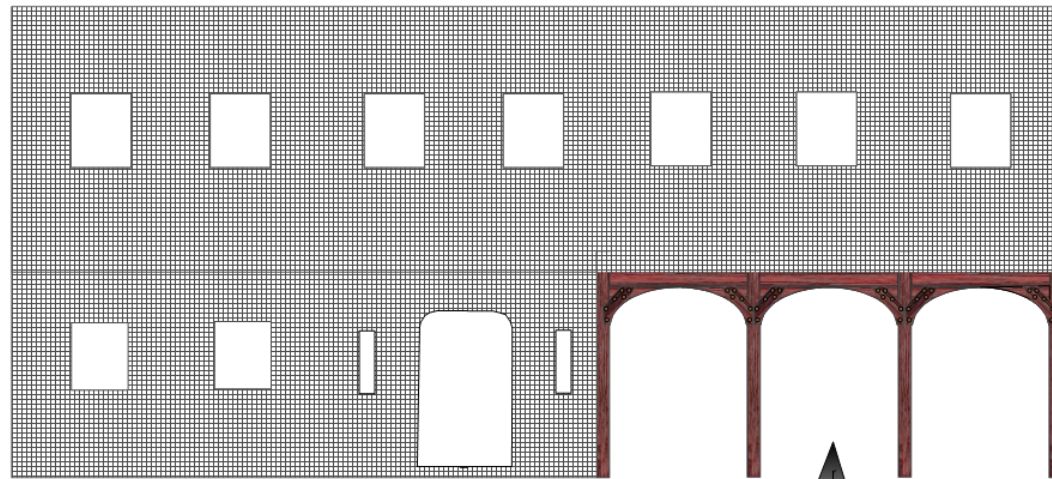
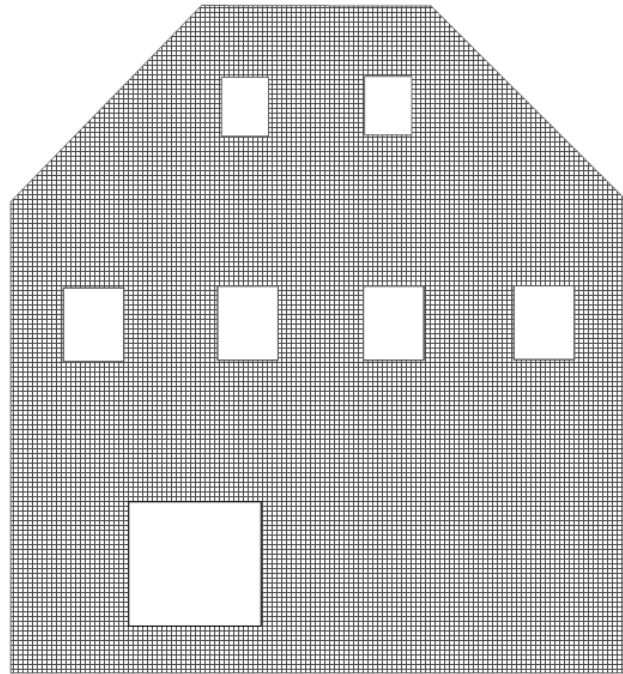
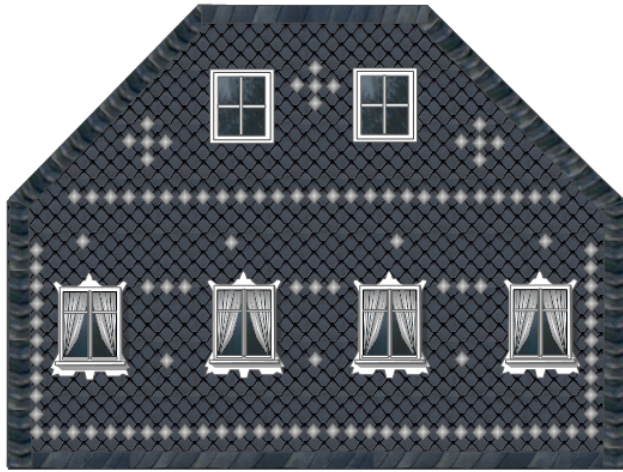


Geschäftshaus



210-300 g/m²

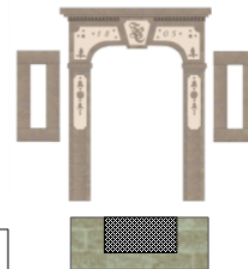
Teile zum Überkleben



H0

Maßstab 1: 87
Nenngröße H0

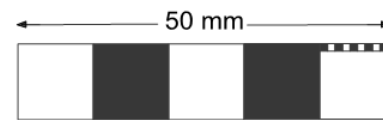
Sockel ✂



✂ Blockteil
hinterkleben

Sockel ✂

Artikelnummer: GHE0004-H0 Blatt 3 von 9



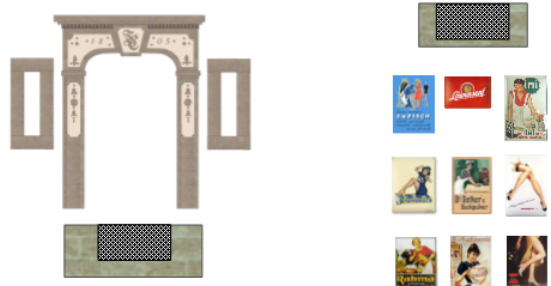
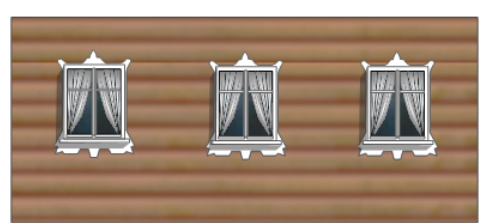
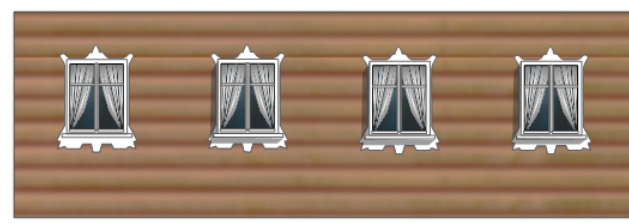
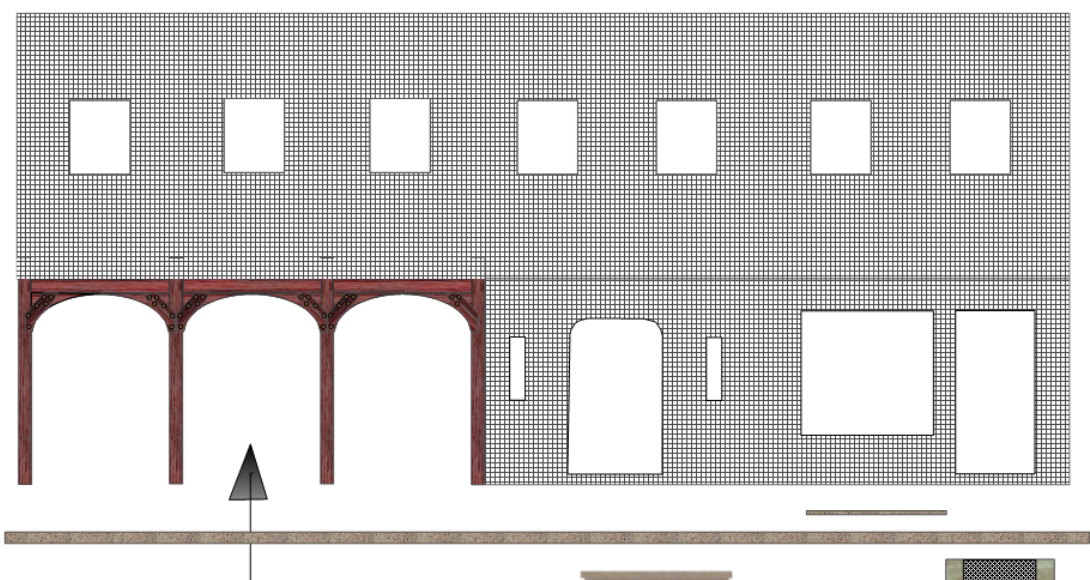
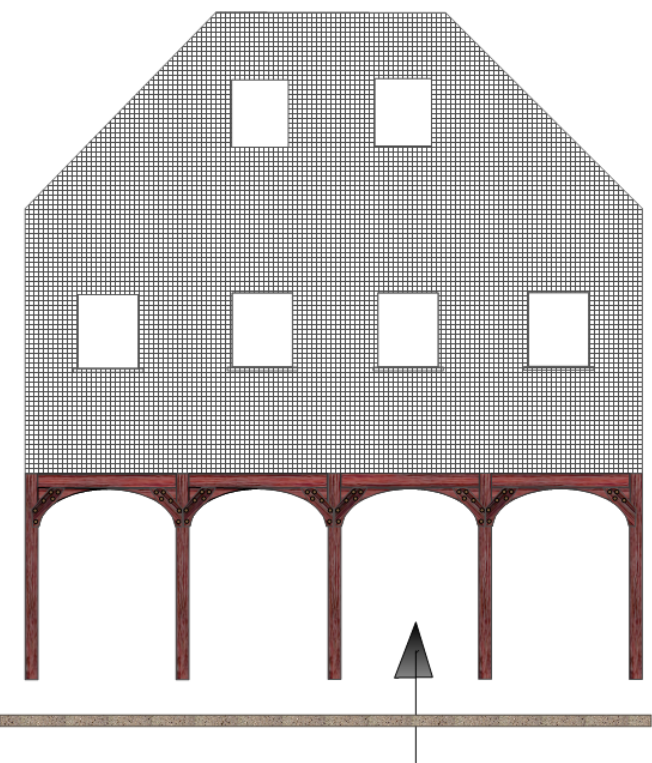
Maßstab 1: 87
Nenngröße H0

H0

210-300 g/m²

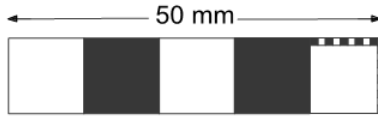
Teile zum Überkleben ✂

Geschäftshaus



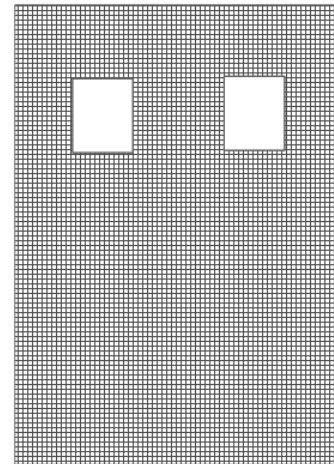
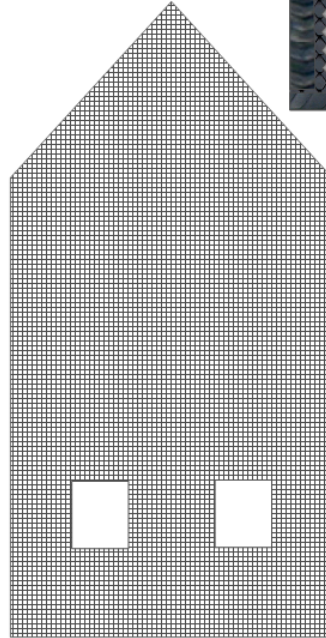
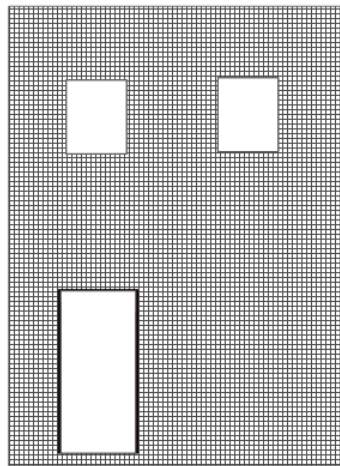
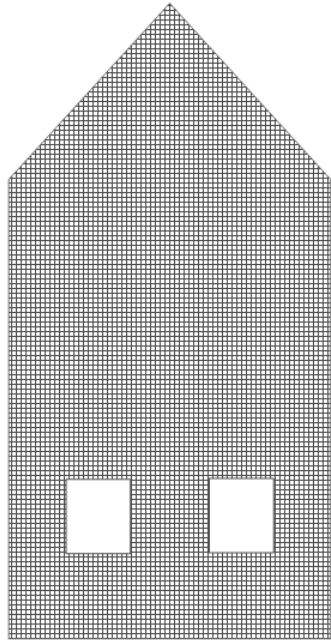
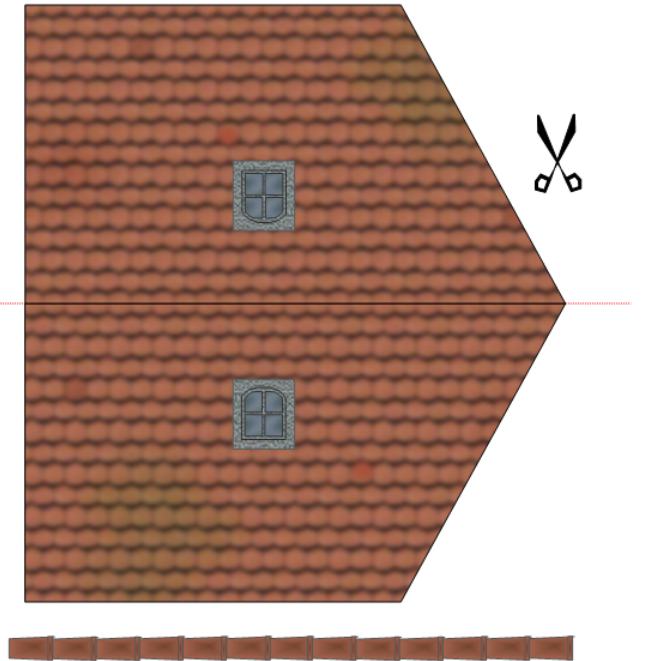
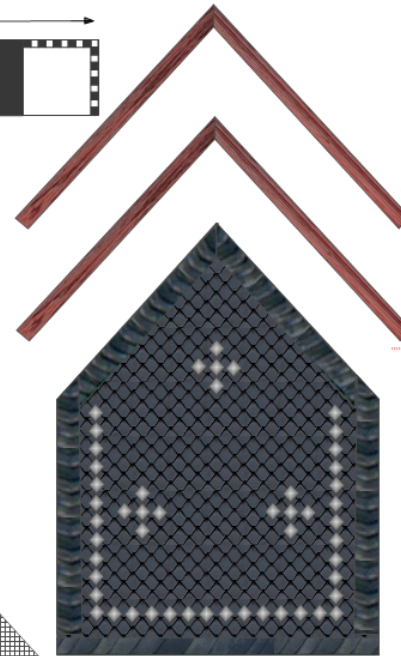
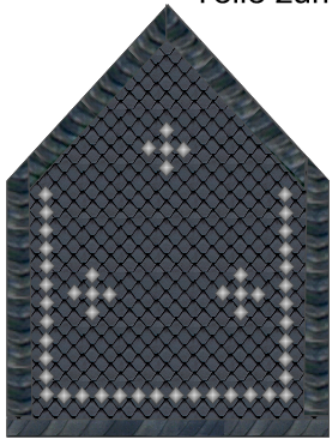
Blockteile ✂ hinterkleben

Teile zum Überkleben

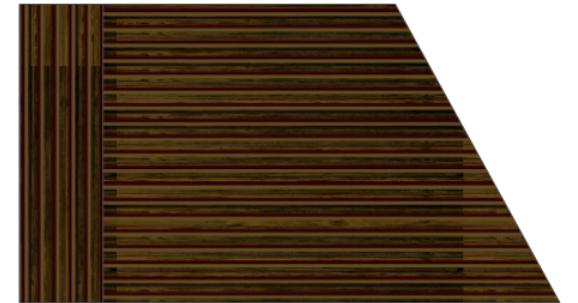


H0

Maßstab 1: 87
Nenngröße H0



Dach (Anbau)



210-300 g/m²

Artikelnummer: GHE0004-H0 Blatt 5 von 9

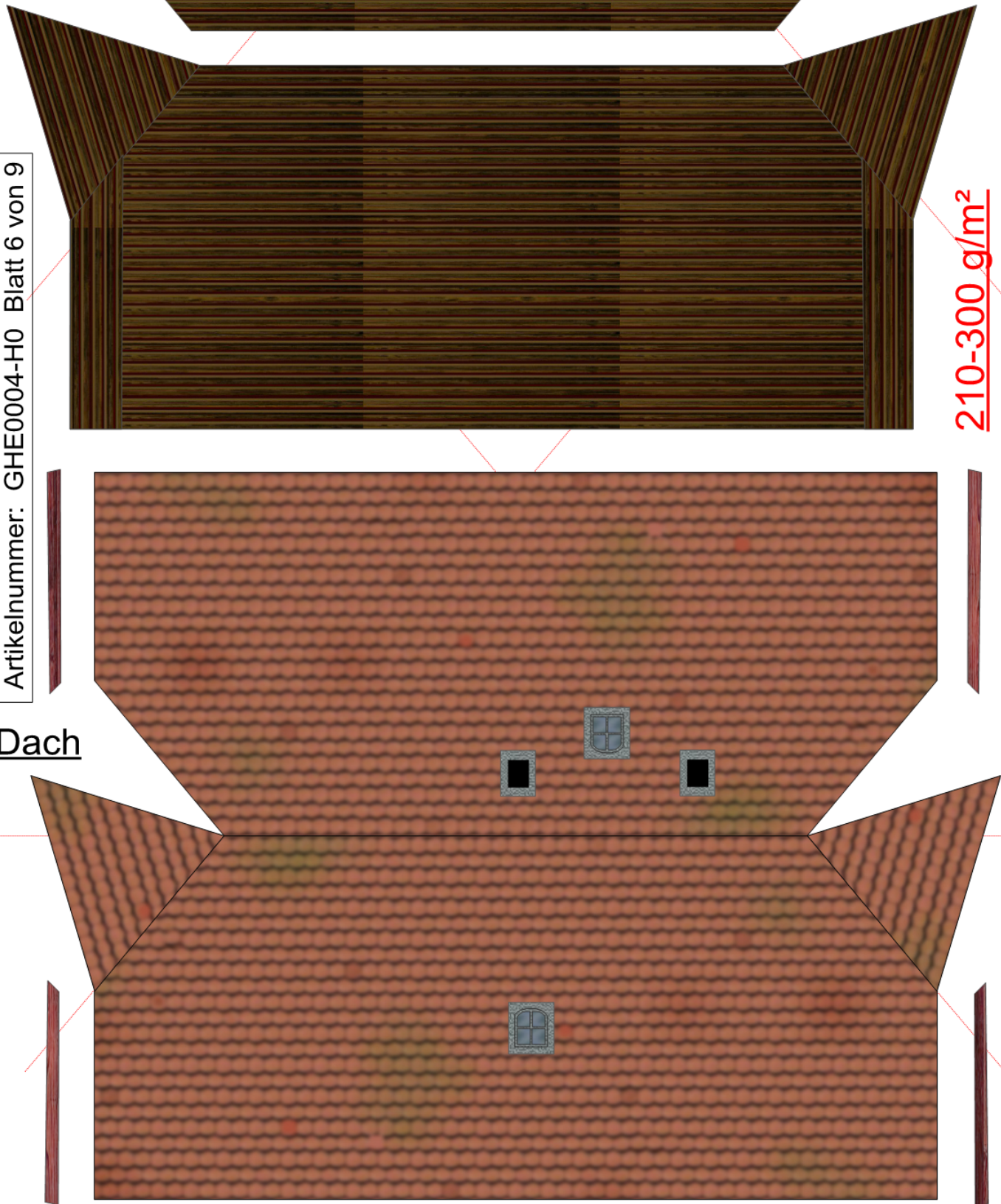
Anbau



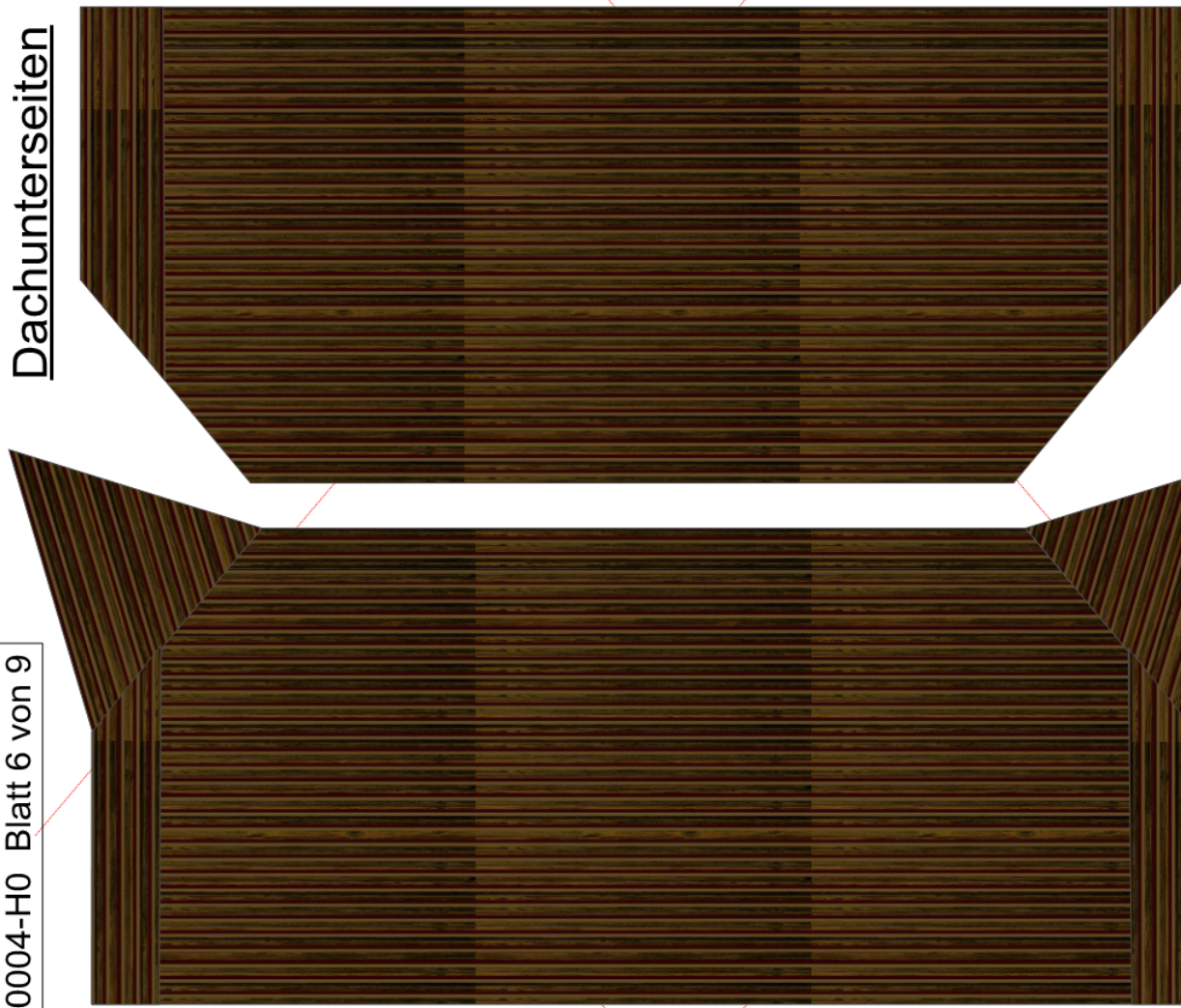
Dachunterseiten

Artikelnummer: GHE0004-H0 Blatt 6 von 9

Dach

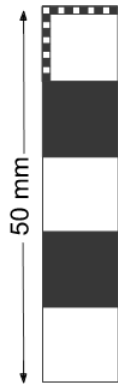


Dachunterseiten



Maßstab 1: 87
Nenngröße H0

H0



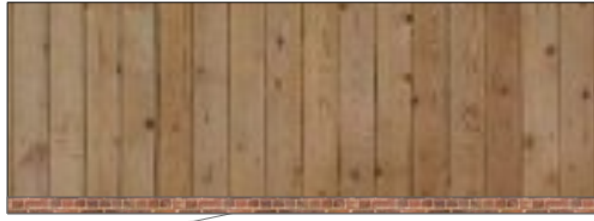
210-300 g/m²



Dach



bedruckte Seite muß nach Außen zeigen

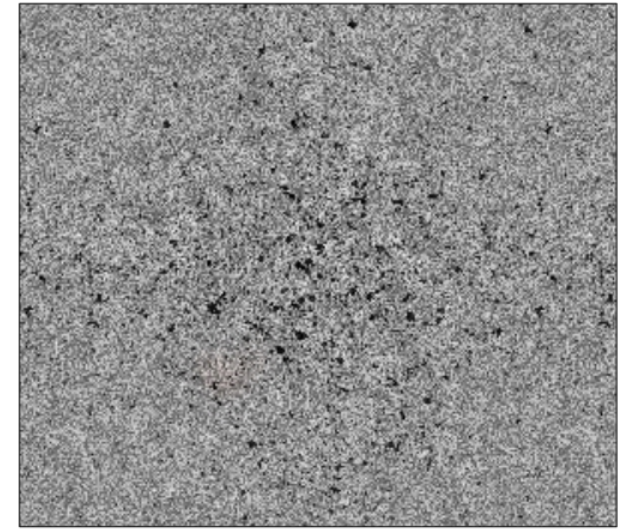


Innenseiten

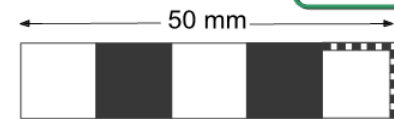


H0
Maßstab 1: 87
Nenngröße H0

Trennwand



Grundplatte



210-300 g/m²

Dachunterseite



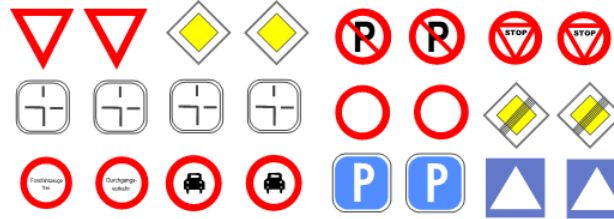
Nebengebäude



Artikelnummer: GHE0004-H0 Blatt 8 von 9



Maßstab 1: 87
Nenngröße H0



KOLONIALWAREN - LEBENSMITTEL
Obst u. Gemüse Fritz Kühn Weine u. Spirituosen

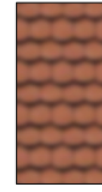
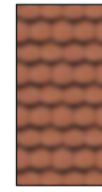
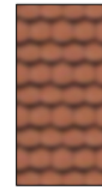
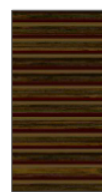
HO LEBENSMITTEL

Haushaltswaren

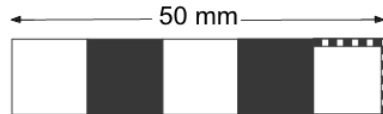
LEBENSMITTEL Inhaber: J. Krüger

HO LEBENSMITTEL

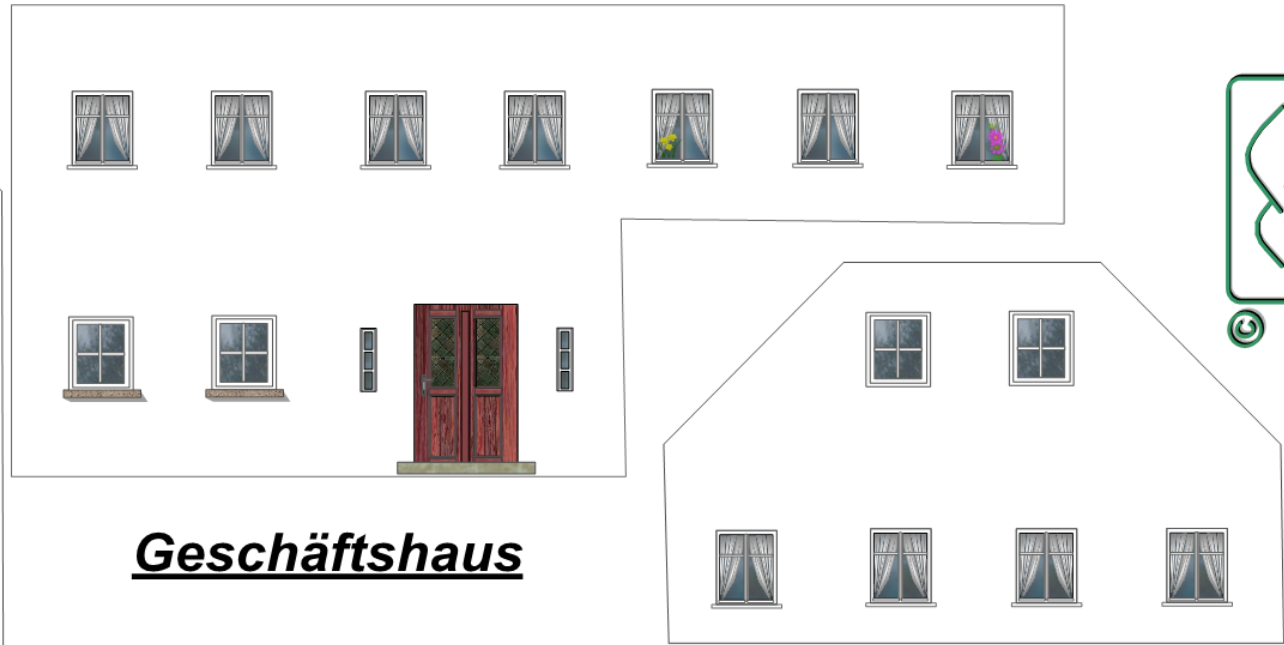
Lebensmittel



Dächer (Dachgauben)



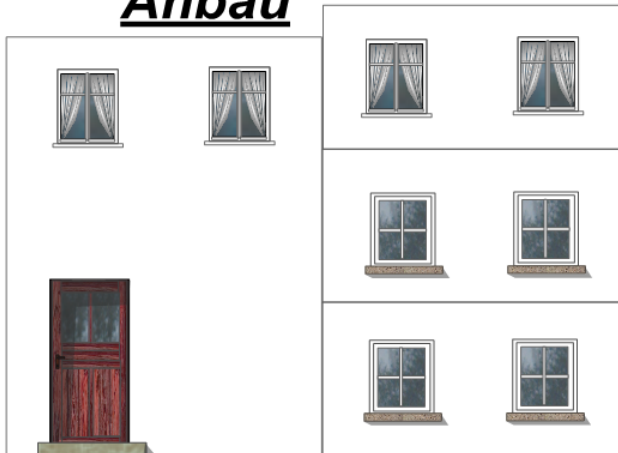
210-300 g/m²



Geschäftshaus

Teile zum Hinterkleben

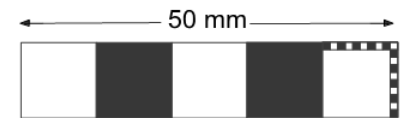
Anbau



Maßstab 1: 87
Nenngröße H0

H0

80-90 g/m²



Blockteile